

When the Show Must Go On...



In both the business and education worlds, time is money – and “technical difficulties” are costly indeed. Whether your audience members are 15 or 50, a botched presentation damages your credibility and detracts from the impact of your message.

Much of today’s cutting edge technology is fast out-pacing the average user’s ability to access it. The most sophisticated AV equipment in the world is useless if your teachers/presenters don’t know how to control it.

1UControl is the answer.

At Center Stage

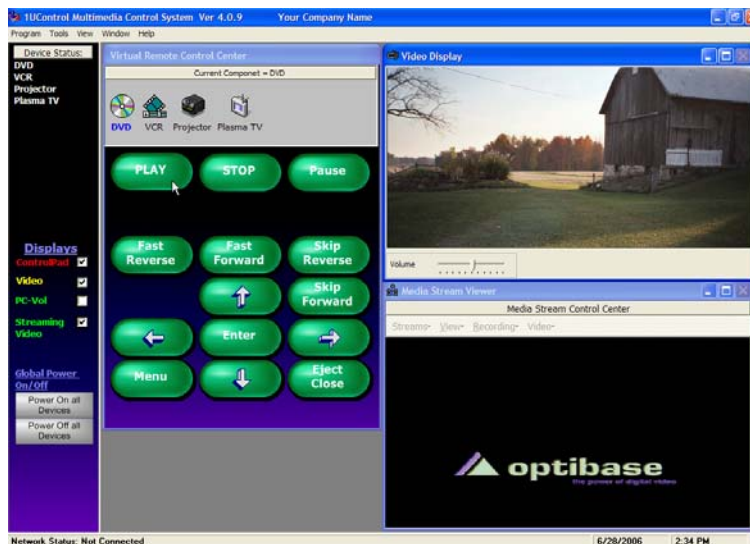
1UControl’s Virtual Remote Control Center allows the teacher/presenter to control all AV equipment – Plasma, LCD-TV, projector, document camera, DVD/VCR, sound system and more – in a classroom or boardroom from a single, easy-to-use software application.

No more fumbling for multiple remotes, and hoping they have good batteries. No more frantically trying to figure out why there is sound but no picture.

Clear, consistent graphical displays relieve the stress of switching from one piece of AV equipment to another, and encourage dynamic, creative presentations that fully utilize all of your AV equipment.

Behind the Scenes

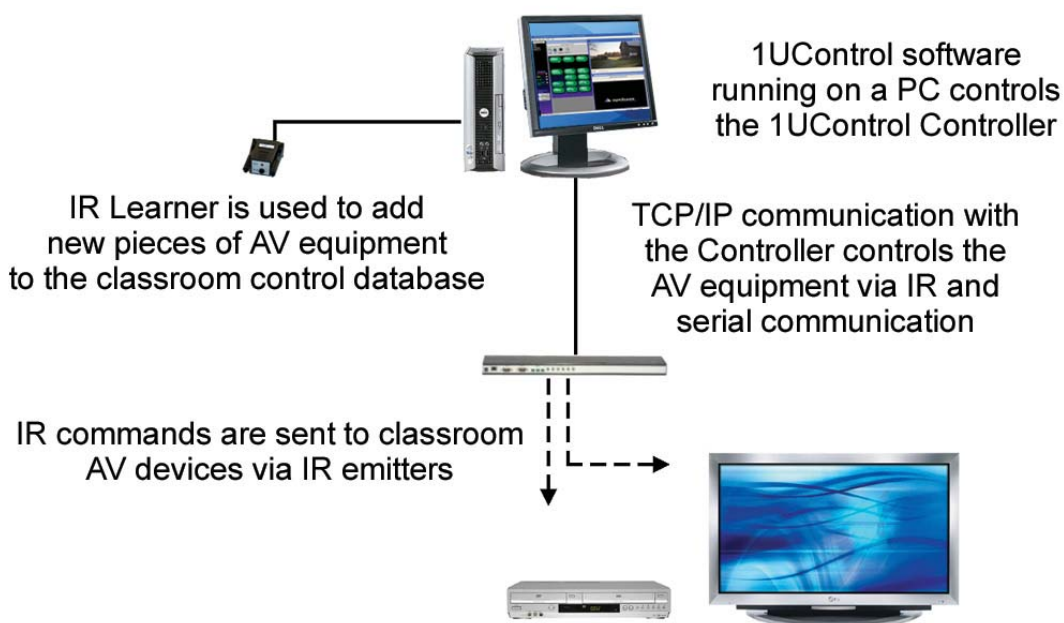
1UControl’s Administrative feature offers the ability to review information about the AV equipment in each connected classroom. An administrator can monitor equipment usage through a Device Usage report, or view the On/Off status of any serially connected devices. Adding AV devices to a classroom’s IR control database is a simple, straight-forward process, and an administrator can customize the button sets and appearance of the desktop display.



How It All Comes Together

The 1UControl software controls both IR and serial AV equipment through the use of the 1UControl Controller and an AV 4x1 switcher. The Controller can communicate with and control both RS-232 and IR driven equipment. 1UControl offers a variety of hardware and software options to customize the 1UControl system to fit your needs.

The graphic below offers a simple overview of the basic components of the 1UControl system. Contact 1UControl for more information about the full range of possibilities to optimize the use of all the AV equipment in every classroom or boardroom.



Additional Information

This graphic depicts the simplest 1UControl configuration. You can optionally add a network hub/router to communicate to a user network, video capture card to display video on the desktop PC, and a streaming solution from Optibase. Contact 1UControl for more information.

